



OFFICE
6, 29-40, 47-50

St. Georges Road, Addlestone, KT15 2AY

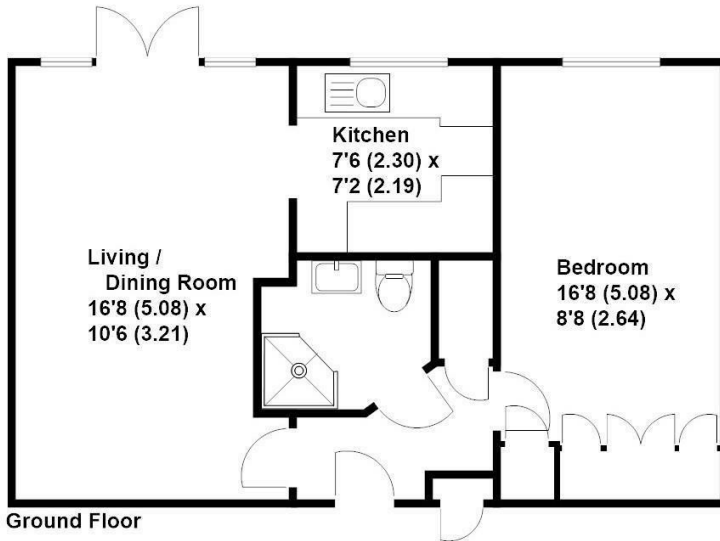




Offered to the market with no onward chain is this ground floor one bedroom apartment set in an over 55's (women) & over 60's (men) development a short stroll from the town centre. The property consists of a good size double bedroom with built in storage, shower room with easy shower access, kitchen with own laundry facilities and living room with doors out to a small patio as well as the communal gardens. The development benefits from communal gardens, owners lounge, 24hr careline system in the apartments and communal areas and a lodge manager who is on duty Mon - Fri. New Owner to be Provided with a new 99 year lease upon completion.

Leasehold





Approximate Gross Internal Floor Area - 450 sq/ft - 41.8 sq/mtr

Grants Independent has prepared these sales particulars for general guidance purposes only. They do not form or constitute any part of an offer or contract. The services, systems and appliances listed in these details have not been tested by us, and no guarantee is given to their operational ability or efficiency. Lease details, service charges and ground rent are given as a guide and should be checked by your solicitor prior to exchange of contracts. These plans are not drawn to scale and are for representational purposes only. Created by www.visionwithin.co.uk



EPC Rating: 69 C





Grants Homes 155 Station Road, Addlestone, Surrey, KT15 2AT
T: 01932 858885 E: addlestone@grantshomes.co.uk

